

CARE TIPS

Coop Wood Care: To protect wood and increase durability, wood can be coated with a non-toxic outdoor paint or water based sealant. For best results, re-coat yearly, especially in climates with extreme weather conditions.

Cleaning Instruction: Clean with water and mild soap. Avoid harsh detergents. Dry completely.

Coop Anchoring: Coops, like all small outdoor sheds or structures, can be moved by heavy winds and storms. To provide additional stability to your coop, use techniques recommended for outdoor sheds.

Additional Tips to Increase Predator Resistance:

- If allowing chickens to free-range during the day, always make sure they are secured in the coop at night.
- Install hardware cloth around the bottom of coop to protect against digging predators.
- Use food concealing feeders to protect against rats and mice.

WARNING:

Do not climb on the unit.
Children should not be allowed in, on or around the unit without proper supervision.
If any structural component is discovered to be broken or missing, stop the use of the product immediately.
Check hardware periodically to ensure screw/bolt tightness and security.
Keep coop in safe area away from high winds and extreme temperatures.
Never use heating lamps for risk of fire.



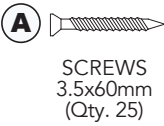
KIESAU™ is a trademark of Mid-States Distributing, LLC.
© Mid-States Distributing LLC. Manufactured for and distributed by
Mid-States Distributing, LLC Fort Worth, TX 76137 USA.
For assistance please call 888-376-7375. Made in China.



ESTATE - LARGE CHICKEN COOP

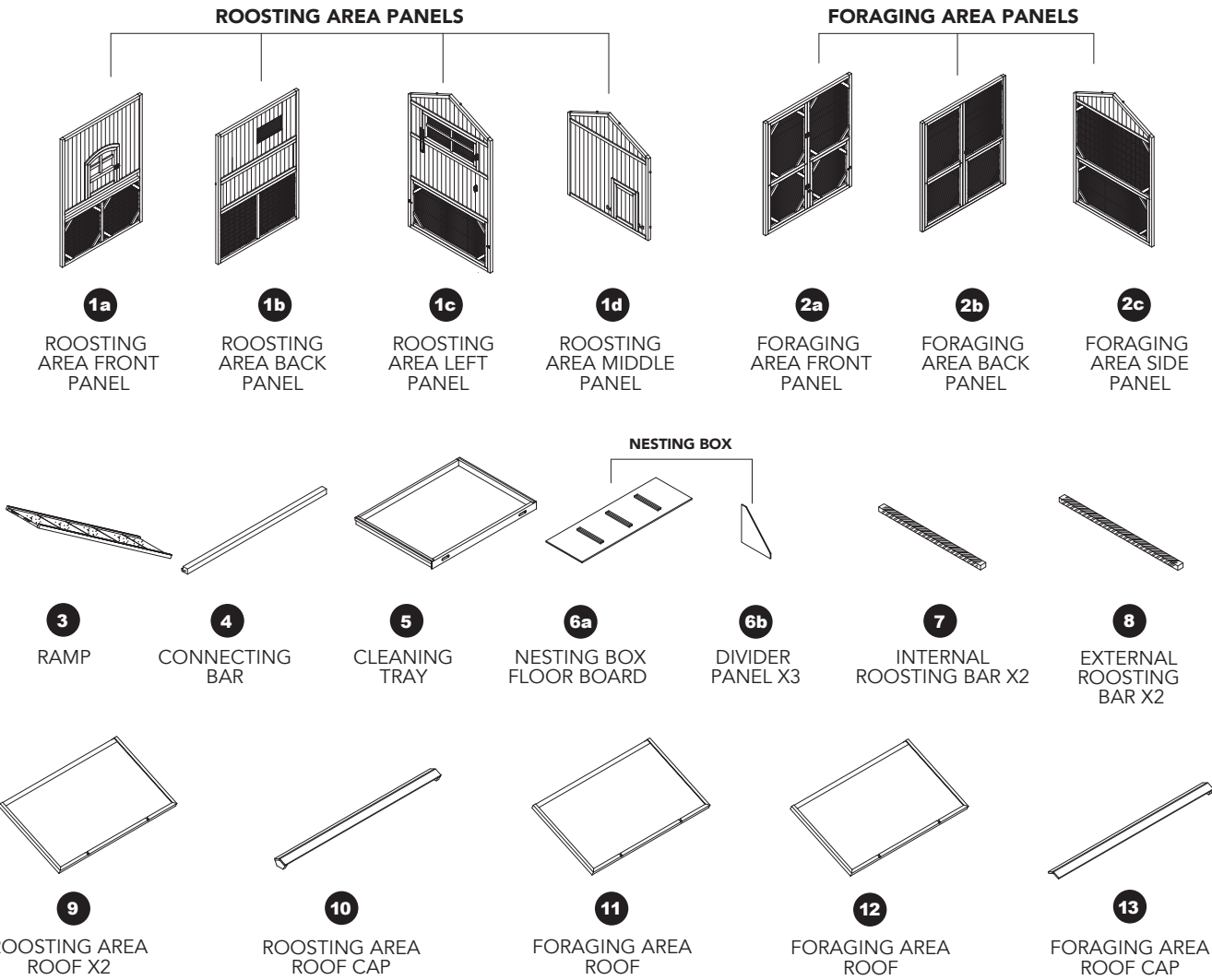
THIS BOX CONTAINS THESE PARTS: KS-007

FASTENERS



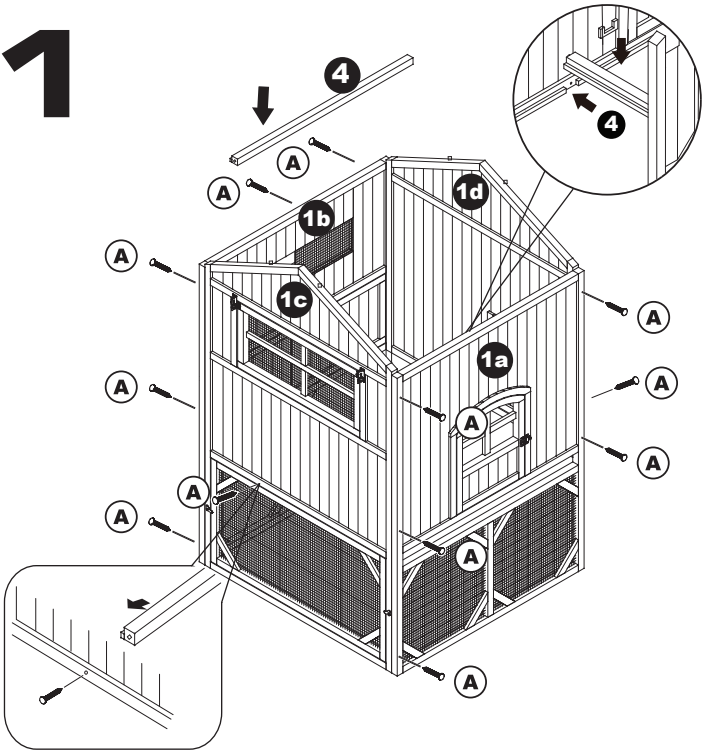
Contains one extra of each screw.

WOOD PIECES

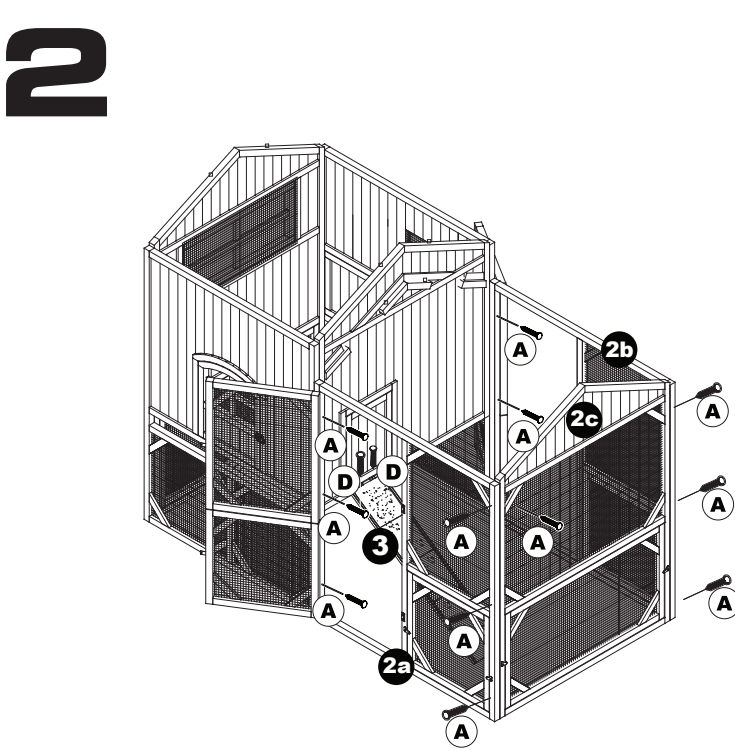


ASSEMBLY INSTRUCTIONS

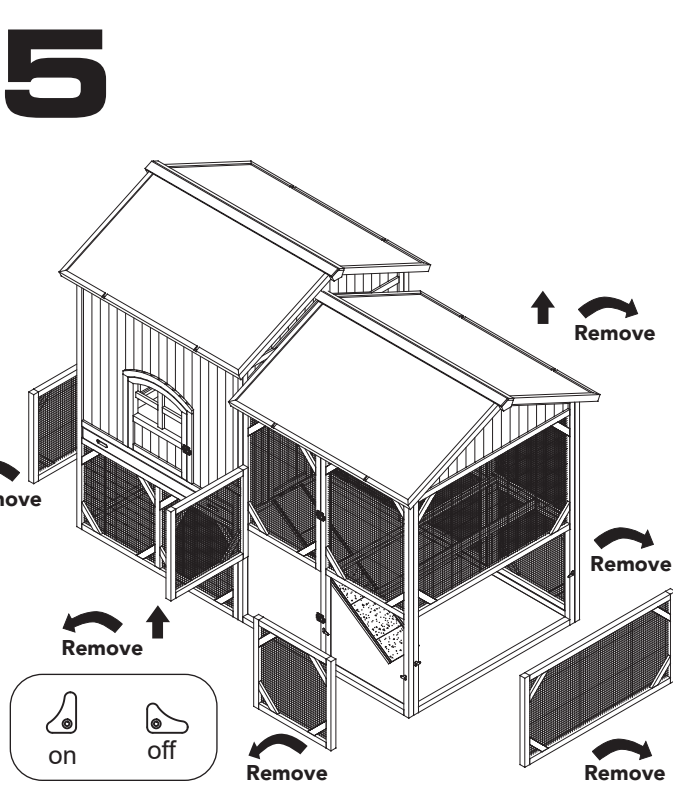
*Use Screwdriver for Assembly



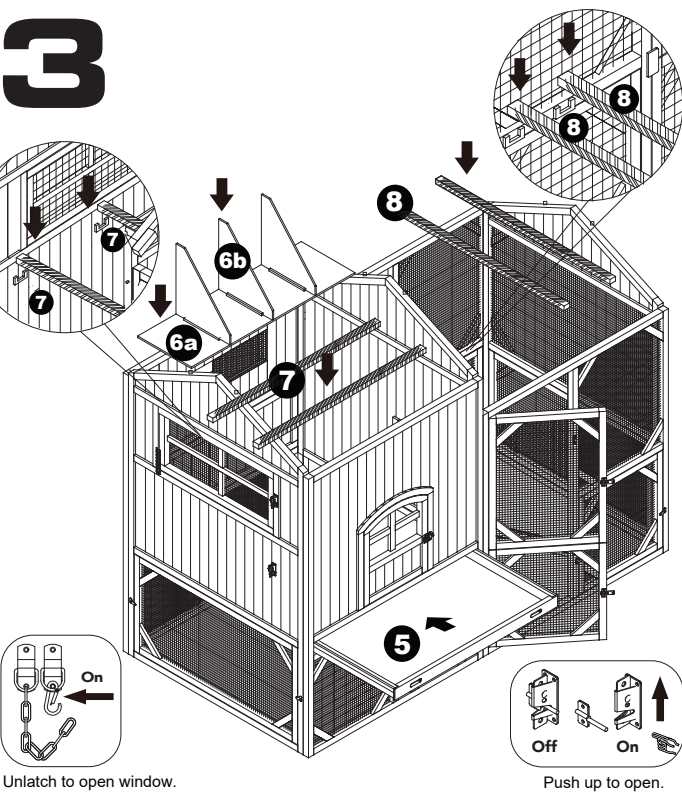
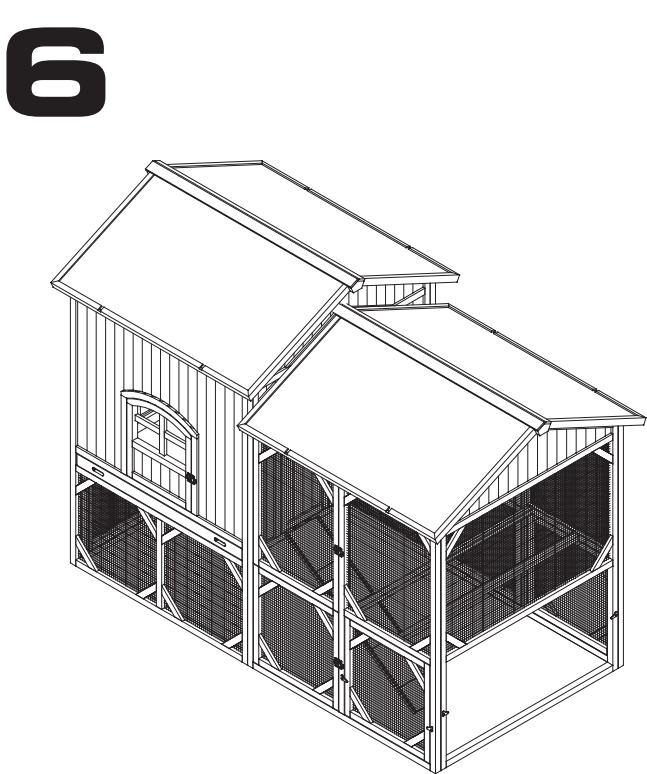
Connect Roosting Area Panels (1a, 1b, 1c) with Screws (A). Insert Connecting Bar (4) with Screws (A) - follow the arrow to the pilot holes. Connect Roosting Area Middle Panel (1d) with Screws (A).



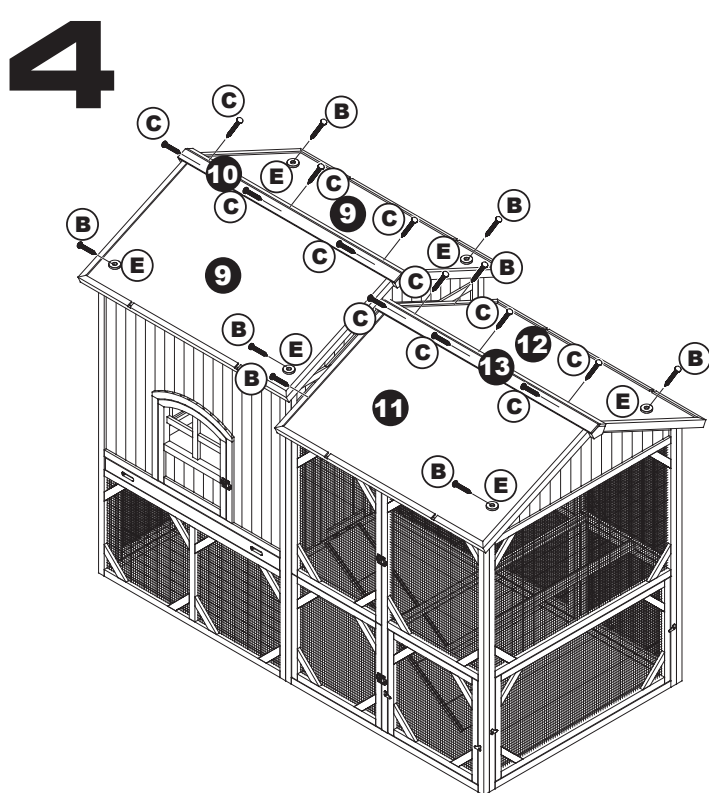
Connect Foraging Area Panels (2a, 2b, 2c) to Roosting Area with Screws (A). Attach Ramp (3) with Screws (D).



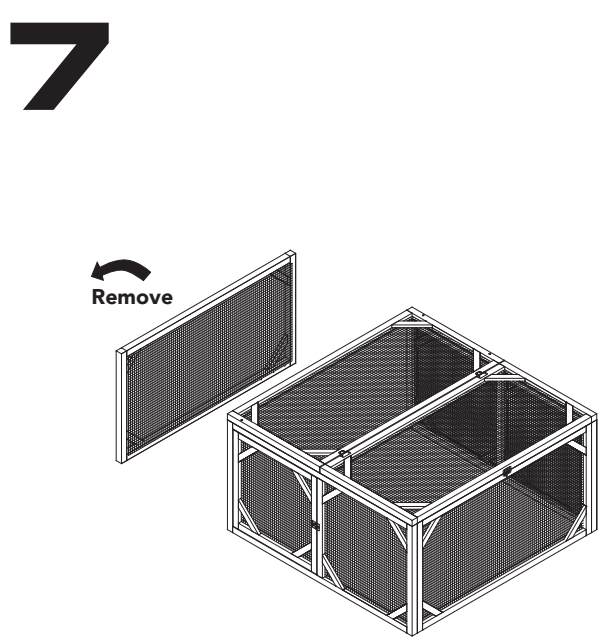
Bottom panels can be removed by turning the lock.



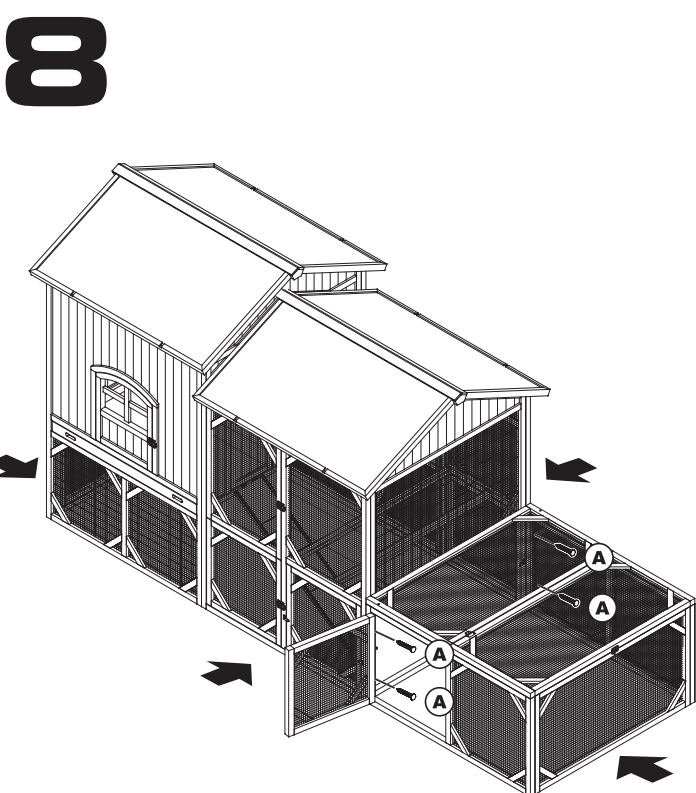
Insert Cleaning Tray (5). Insert Nesting Box Floor Board (6a) and Nesting Box Dividers (6b). Insert Internal Roosting Bars (7). Insert External Roosting Bars (8).



Attach Foraging Area Roof (11,12) with Screws (B) and Plastic Washers (E). Next attach Roosting Area Roof (9) with Screws (B) and Plastic Washers (E). Then attach Roosting Area Roof Cap (10) and Foraging Area Roof Cap (13) with Screws (C).



If you want to connect the KIESAU Modular Free-Run Chicken Pen (KS-008) to this chicken coop (LS-007), remove left panel (3).



To connect KS-008 and KS-007 follow the arrow side with screws (A).